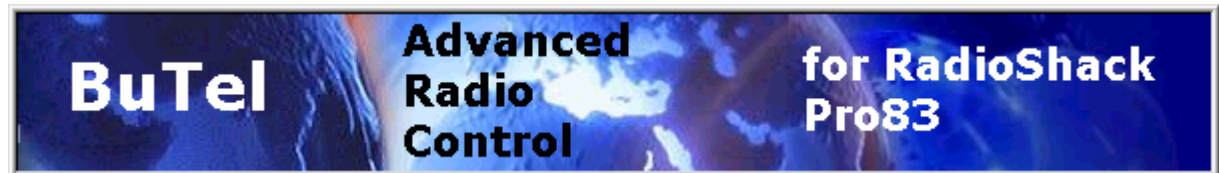


ARC83-LITE for PRO83 **Software User Manual**

Version DEC-2004 1.02



<C> 2005 BuTel software The Netherlands – all rights reserved

www.butelsoftware.com

Contents:

- 1 Introduction and quick start reference
 - 1.1 Software Installation
 - 1.2 Enter registration information
 - 1.3 Connecting the scanner to your PC
 - 1.4 RS232 port setup
 - 1.5 USB information
- 2 Using the memory channel editor
 - 2.1 General hints and tips for using the editor
 - 2.2 Programming conventional frequencies
 - 2.3 Sort data
 - 2.4 Easy Fill
 - 2.5 Using the clipboard
 - 2.6 Copy/Move/Swap banks/channels
 - 2.6.1 Copy/Move/Swap memory channels
 - 2.6.2 Copy/Move/Swap memory banks
 - 2.7 Fill Down / Fill Series
 - 2.8 Other editor options
 - 2.9 Importing frequencies from a website using WebCatcher
 - 2.10 Priority Channels
 - 2.11 Sending data to the scanner
 - 2.12 Import/Export data
- 3 Software and scanner setup
 - 3.1 General software setup
 - 3.2 Tags
 - 3.3 Automatic MEM file backup
 - 3.4 Paste Special
- 4 Misc. items
 - 4.1 Software ini files
 - 4.2 Troubleshooting RS232 communication problems
 - 4.2.1 Set/Check communication settings
 - 4.2.2 Check your cable
 - 4.2.3 Other serial devices
 - 4.2.4 Serial/USB drivers
 - 4.2.5 Comm error 8018
 - 4.3 Software support
 - 4.4 Revision history

1: INTRODUCTION:

ARC83-LITE is a windows software package for easy programming the RadioShack PRO83 scanner.

IMPORTANT: the Pro83 uses one way PC communication only. This means that you can only send data from a PC to the scanner. You can NOT read data from the scanner. This is NOT a limitation of the software, it is a limitation of the firmware in the scanner.

IMPORTANT: after data is uploaded in the scanner, you must unplug the PC interface from the PRO 83 to initialize the new data!

System requirements:

Windows 95/98/ME/XP/Win2000/NT

minimum display resolution settings: VGA 800x600

SMALL Fonts

Free serial port com1-com8

PC interface: for example BuTel model IF2B or RadioShack 20-289 , there are many interfaces available.

ARC83-LITE Quick Start Reference:

- Install the software (1.1)
- Enter the registration information (1.2)
- Connect the scanner to the PC (1.3)
- Setup the RS232 serial communication port number (1.4)

IMPORTANT: YOU MUST ENTER A VALID REGISTRATION CODE TO MAKE FULL USE OF THE SOFTWARE. THE REGISTRATION CODE IS SEND TO YOU BY E_MAIL (IF YOU PURCHASED ONLINE) OR IS IN THE CD BOX. DO NOT LOSE THIS INFORMATION; YOU NEED IT FOR FREE UPDATES!

USB DEVICES ARE NOT SUPPORTED, USE AT YOUR OWN RISK

1.1 Software installation:

The ARC83-LITE software is available as Internet download or on CD-ROM.

Win2000/XP users: You must be logged on as administrator to install and use ARC83-LITE.

Internet download:

The downloaded file contains all the necessary files for installation. Run the exe file and the installer will automatically start.

CD ROM:

Insert the CDROM; the CDROM has an auto start option that will automatically start the installation process. If the installation process does not start, simply run setup.exe

During the installation process you can set the installation directory. We suggest using the default directory. You cannot install the software on a network drive.

Software un installation:

ARC83-LITE will automatically add an uninstall option. Use the Windows Control panel for uninstalling the software. Backup your work before using the uninstall option.

1.2 Registration:

After installation of the software, the program runs in DEMO mode. You must enter a valid registration code to activate the software. You can NOT upload data to the PRO83 in demo mode.

Internet download: customers that purchased using the Internet download option, received a registration code by e-mail. It is VERY IMPORTANT that you store the registration code in a safe place. If you loose the registration information you must buy a new registration code.

CDROM: in the jewel case of the CDROM you find the registration information. Store the case of the CDROM in a safe place.

Enter registration:

Start the software by selecting START _ PROGRAMS _ ARC83-LITE _ ARC83-LITE for RadioShack PRO83. After the start screen, select HELP _ REGISTER in the menu.

Enter the name and key information: the name is case sensitive!
No spaces are allowed. The key only contains numbers. The name may contain '0' (=zero) or capital O.

1.3 Connect you scanner:

The scanner must be connected to a free serial port using the PC interface. This is normally a 9-pin connector at the back of your PC. Refer to your scanner manual for information.

When you plug in the PC interface the Scanner display must show 'WIRED'.

ARC83-LITE does not support USB devices/converters, use USB devices at your own risk.

1.4: Getting started: RS232 communication setup

After installation of the software you must check and set the software settings for RS232 communication.

Start the software and select: PRO83 _ Send Data , select the comport and press OK.



1.5: USB information

RadioShack scanners use a standard RS232 port for computer programming and control. RadioShack scanners do not have a USB port available. Therefore ARC83-LITE is developed to support standard serial comports.

For laptop PC's that do not have a serial port we advise to use a PCMCIA serial port extender card.

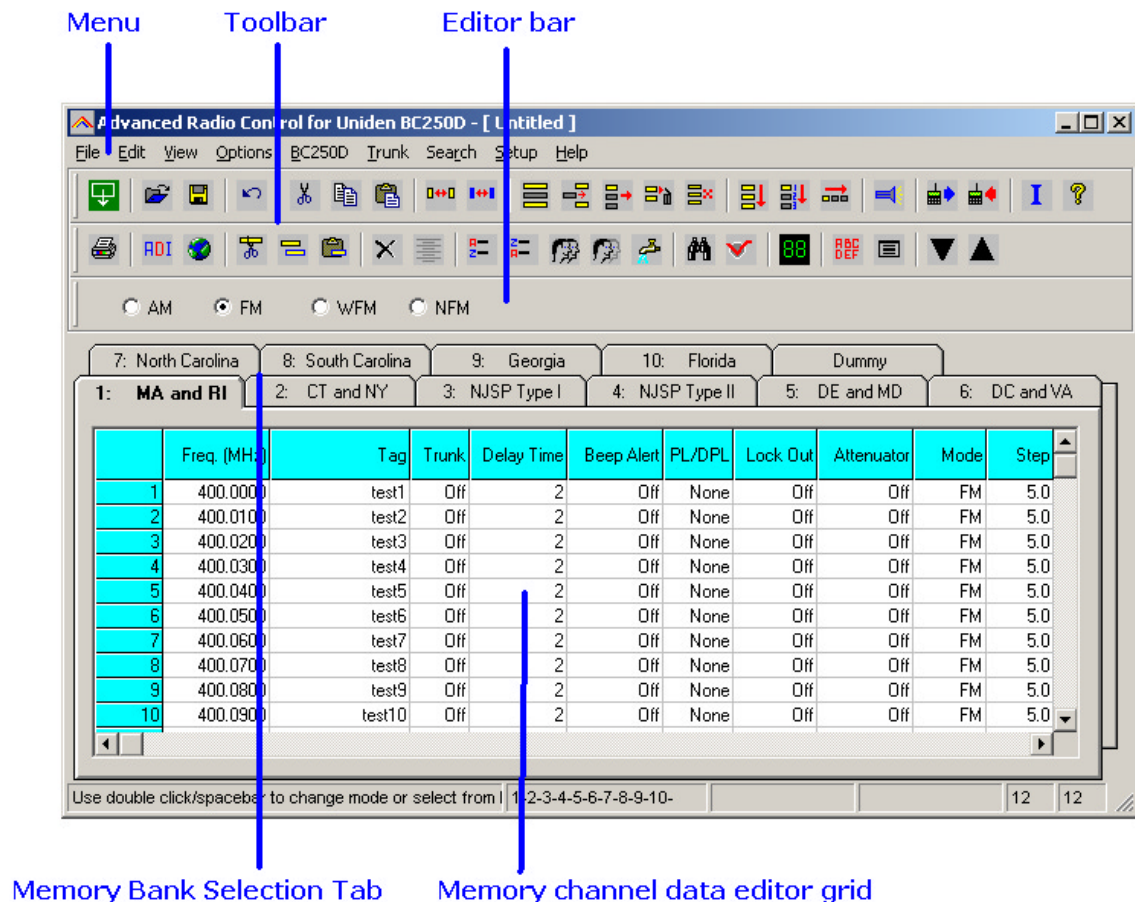
Several manufacturers also sell serial<>USB converters. These converters create a virtual software rs232 port and can work very unreliable. Because USB is not the standard computer interface port for RadioShack scanners, BuTel does not support communication problems when a USB converter device is used.

For support in case of communication problem customer should contact the supplier/manufacturer of the usb device.

2: Using the memory channel editor:

ARC83-LITE includes the most versatile memory editor available on the market. Unlike other software packages you can use ARC83-LITE without a scanner connected.

This section describes most options available in the memory editor; in order to use the full power of the editor it is important that you read this section carefully. The editor does not require that a scanner is connected.



The memory editor has a clear layout:

The top section has a standard Windows MENU bar and a Toolbar. Most options found in the menu also have a 'shortcut' in the toolbar. If the mouse is moved over a toolbar button a help text is shown giving a brief description of that button.

The editor bar changes as you move the mouse in the editor grid, if you click on a column the editor bar will show the right edit options. You can edit data both in the editor bar or directly in the editor grid.

Using the memory bank selection tab you can set the active memory bank that you want to edit.

2.1: Hints and Tips

Once data is transferred to the memory channel grid you can use many options to edit your data. ARC83-LITE is the most versatile editor available on the market.

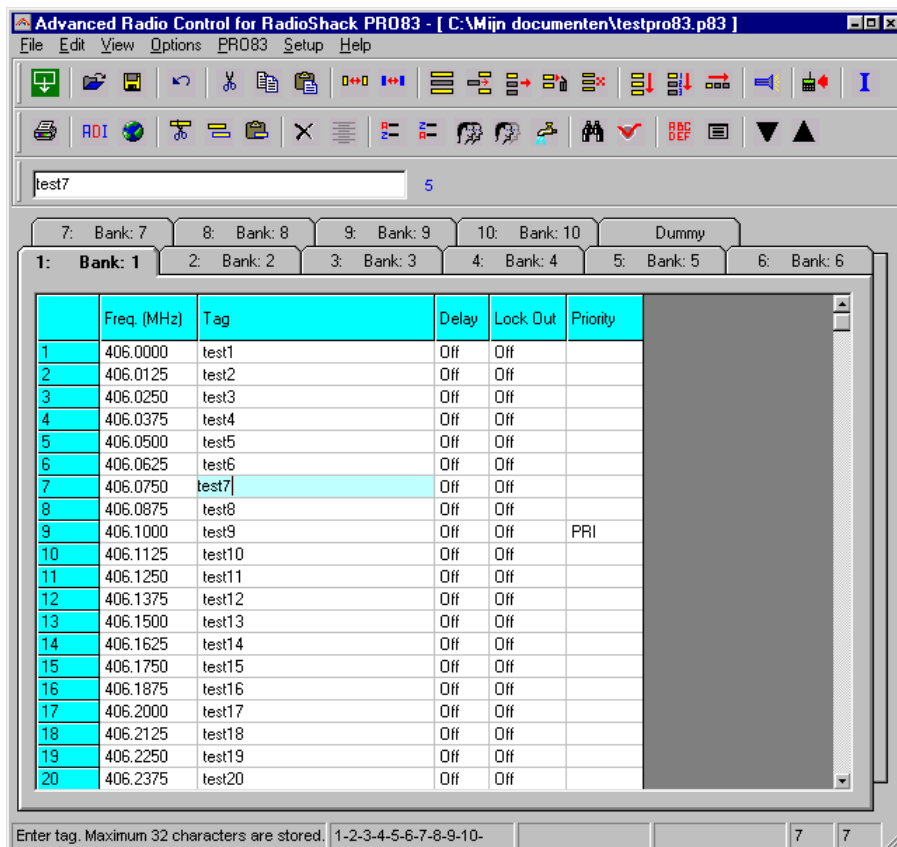
Using the menu or toolbar you can easily move/copy/sort data. All options also have a toolbar button available. Moving the mouse pointer over a toolbar button will show a small popup help text.

General information about using the memory channel editor grid:

You can edit data directly in the grid or you can use the editor bar. The editor bar will automatically change if you click on a column. In the grid there is no cursor shows.

In the frequency and tag columns you can directly type data, to edit existing data use the editor bar above the grid. You can only use the backspace to correct data, for advanced edit, use edit box above the grid or use double-click:

You can also go to edit mode by using **double click** in the frequency or tag column. The background color will change to light blue, indicating you are in edit mode. You can now use cursor buttons etc to edit data:



Most columns support **double click** for easy data toggle. The space bar has the same effect as using the mouse double click.

Keyboard shortcuts:

In some columns you can also use keyboard shortcuts:

On/Off columns: 0 = OFF, 1=ON, F=OFF, N=ON.

2.2 Programming frequencies:

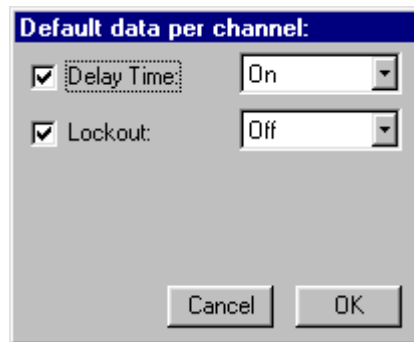
You can enter frequencies directly in the grid. In the grid there is no cursor shown. You can use BACKSPACE to make corrections in the grid.

You can also enter 'Edit' mode by double clicking a cell: the cells background color will change, indicating you are in Edit mode. When you leave the cell the data is automatically transferred into the grid.

If you click on a cell the current data is copied to the editor bar, in the editor bar a cursor is shown (frequency and tag column only).

You can also double-click a cell (frequency or tag) to show an edit box in the grid (blue background).

When you enter a frequency and you press ENTER the other cells of that line are automatically programmed depending on your custom settings (default channel data). You can customize the default data: select SETUP _ SETUP DEFAULT DATA. A new window is shown:



In this window you set the default data that is put in the grid if you press enter. All parameters that have the check box selected will be put in the grid. By using this option the software will take care of programming default data.

Tip: programming your personal preferences in the default data will save you time while programming new frequencies.

When you press <enter> the software will automatically go to the next cell.

2.3 Sort channels

Memory channels can be sorted. You can either sort ascending or descending. You can only sort within a single bank. In general scanners will scan faster when channels in a bank are sorted.

Sorting entire bank: make sure that only one channel line in the grid has the focus, now you can use the sort ascending/descending options.

Sort a range of channels: highlight the range of channels you want to sort, and then select the sort option. Only the selected range of channels will be sorted.

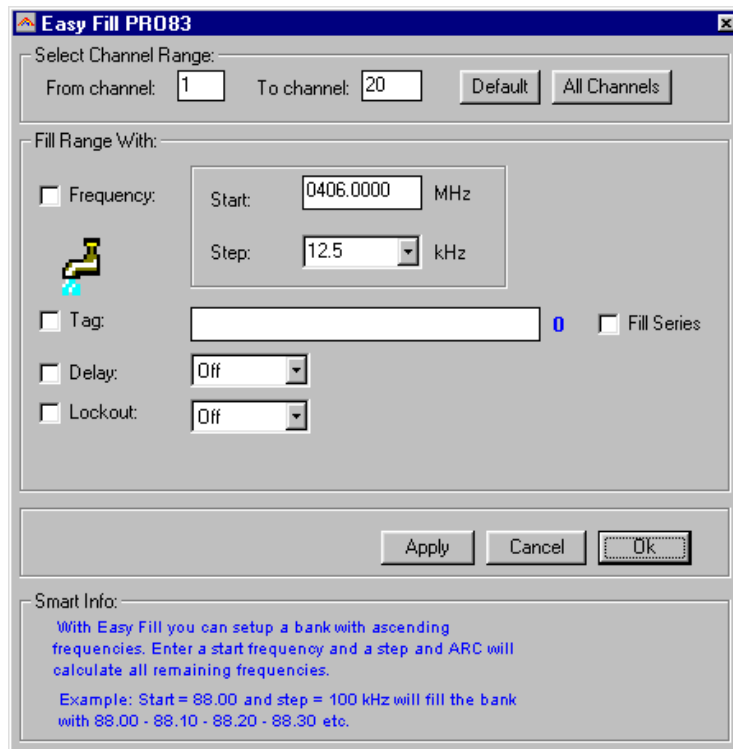
2.4 EasyFill



EasyFill is a simple but powerful option that lets you program data in a range of channels with only a few mouse clicks.

Additionally you can use EasyFill for quickly program a range of frequencies in a memory bank so you can use a memory as a search bank.

Select EasyFill from the Options menu or use the EasyFill toolbar button to display the EasyFill window:



Easy Fill PRO83

Select Channel Range:
From channel: 1 To channel: 20 Default All Channels

Fill Range With:

Frequency: Start: 0406.0000 MHz Step: 12.5 kHz

Tag: 0 Fill Series

Delay: Off

Lockout: Off

Apply Cancel Ok

Smart Info:
With Easy Fill you can setup a bank with ascending frequencies. Enter a start frequency and a step and ARC will calculate all remaining frequencies.
Example: Start = 88.00 and step = 100 kHz will fill the bank with 88.00 - 88.10 - 88.20 - 88.30 etc.

In the top frame the channel range is selected. DEFAULT will set the start and end channel of the selected bank. ALL CHANNELS will set all 200 channels.

In the 'Fill Range With' frame you select the data you want to program in that range. If you want to set the mode for all selected channels to WFM select the MODE check box then select WFM and select APPLY, this will program WFM in all selected channels. You can select more the one check box.

If the Frequency check box is selected you can set a start frequency and a step. The software will automatically calculate the frequencies for the selected channel range.

Example: Frequency is set to 88.000 MHz, step is set to 50 kHz and channel range is 1-100. If you select APPLY the software will program 88.000 in channel 1, 88.050 in channel 2, 88.100 in channel 3 etc.

Fill series: for the TAG option you can also set the fill series option. Fill series will search for a number in the tag and use that number to 'calculate' the tags in the selected channel range.

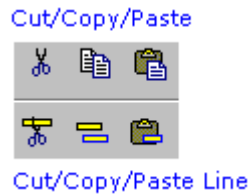
Example: in the tag box the tag is set to 'Police 1'. The channel range is set to 1-100.

If fill series is selected, the software will automatically program 'Police 1' in channel 1, 'Police 2' in channel 2, 'Police 3' in channel 3 etc. See also section 2.9.

The number of characters of the tag box is shown in blue.

2.5 Using the clipboard

In the memory editor grid you can use the standard Windows clipboard options. In the toolbar shortcuts are available for cut, copy and paste options. You can also use the keyboard shortcuts CTRL C, CTRL X and CTRL V. Use these options to paste data from other applications like Excel.



An additional clipboard option is available that will automatically select entire lines (Cut line, copy line and paste line). To use these extra options, click any cell of a memory channel then select cut/copy/paste line. To paste in a different memory channel, select any cell in that memory channel, then select paste line, ARC83-LITE will automatically align the pasted text.

Important: while pasting data make sure the data is valid for the column you want to paste data. Example: you cannot paste WFM in the step column.

2.5.1: Paste Special

Paste Special: This option will paste frequency data from the clipboard into the grid. In the Software Setup you can change the behaviour of Paste Special. Paste Special can import 200 frequencies.

Here is a description how to use Paste Special:

Find a website with frequency data that you want to import:

The screenshot shows a web browser window titled "The Radio Reference Homepage Radio Reference Database - Mozilla Firefox". The address bar shows the URL "http://www.radioreference.com/modules.php?name=RR&aid=2110". The page content includes a text block about a flight team and a table of radio frequencies.

| Frequency | Input | License | Type | Tone | CH | Description | Mode |
|-----------|-----------|---------|------|----------|------|--|------|
| 461.25000 | | WPLR946 | F | | | Downtown Base (also Special School District) | FM |
| 461.52500 | 466.52500 | WPLR946 | Rm | 192.8 PL | | Randolph County Missouri Repeater | FM |
| 462.07500 | 467.07500 | WPLR946 | RM | 107.2 PL | | Central Illinois Repeater (@ Litchfield Base) | FM |
| 452.12500 | 457.12500 | WPLR946 | FF | | | Cardinal Glennon Childrens Hospital (@ St. Louis) | FM |
| 452.17500 | 457.17500 | WPLR946 | FF | | | Unknown Use (Removed from license) | FM |
| 461.72500 | | WPLR946 | F | 192.8 PL | | Sparta Base (Also Special School District - St. Louis) | FM |
| 155.34000 | | WPCH899 | M | | A-01 | Hospitals/Ambulance MERC1-1 | FM |
| 154.28000 | | | | | A-03 | Missouri Statewide Fire Mutual Aid | FM |
| 155.20000 | | | | | A-02 | Hospitals/Ambulance MERC1-1 | FM |
| 155.16000 | | | | | A-04 | Hospitals/Ambulance MERC1-1 | FM |
| 155.47500 | | | | | A-05 | Police - ISPERN | FM |
| 151.80500 | | | | | A-06 | Missouri Baptist Hospital | FM |
| 463.00000 | 468.00000 | | | | B-01 | MED1 | FM |
| 463.02500 | 468.02500 | | | | B-02 | MED2 | FM |
| 463.05000 | 468.05000 | | | | B-03 | MED3 | FM |
| 463.07500 | 468.07500 | | | | B-04 | MED4 | FM |
| 463.10000 | 468.10000 | | | | B-05 | MED5 | FM |
| 463.12500 | 468.12500 | | | | B-06 | MED6 | FM |
| 463.15000 | 468.15000 | | | | B-07 | MED7 | FM |
| 463.17500 | 468.17500 | | | | B-08 | MED8 | FM |
| 462.95000 | 467.95000 | WPCH899 | RM | | B-09 | Med9 | FM |
| 462.97500 | 467.97500 | | | | B-10 | MED10 | FM |
| 462.95000 | 467.95000 | WNJN974 | RM | 192.8 PL | B-13 | Lifebeat Dispatch (@ Cape Girardeau - SE MO Hospital) | FM |
| 464.72500 | 469.72500 | | | | B-14 | Children's Hospital - St. Louis - Security TONE31 | FM |
| 462.95000 | 467.95000 | WPCH899 | RM | 162.2 PL | B-15 | ARCH Dispatch @ Barnes Hospital - St. Louis | FM |
| 160.18500 | | WQAQ35 | BM | | | Air Methods (@ St. Joseph Buchanan County Missouri) | FM |
| 453.01250 | 458.01250 | WPCH899 | M | | | Mobile Extenders | FM |
| 464.47500 | 469.47500 | WPFU313 | RM | | | SE MO Hospital @ Cape Girardeau | FM |

Air Frequencies

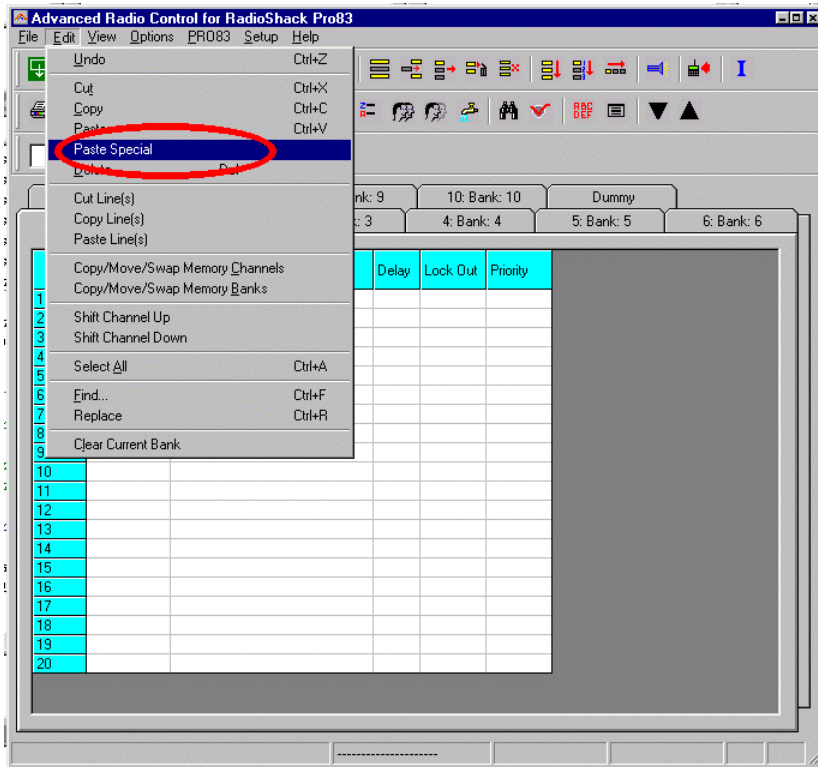
Highlight the section that you want to import:

shifts (pilots 12 hour shifts, rotating at 6:45 am/pm), about 10 days per month

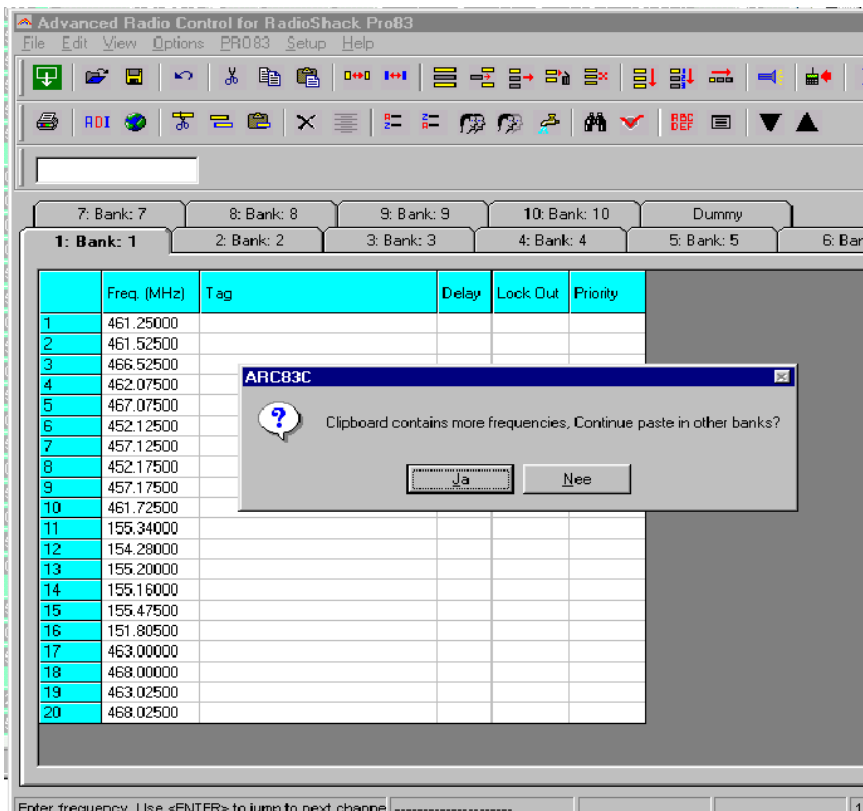
| Frequency | Input | License | Type | Tone | CH | Description | Mode |
|-----------|-----------|---------|------|----------|------|--|------|
| 461.25000 | | WPLR946 | F | | | Downtown Base (also Special School District) | FM |
| 461.52500 | 466.52500 | WPLR946 | Rm | 192.8 PL | | Randolph County Missouri Repeater | FM |
| 462.07500 | 467.07500 | WPLR946 | RM | 107.2 PL | | Central Illinois Repeater (@ Litchfield Base) | FM |
| 452.12500 | 457.12500 | WPLR946 | FF | | | Cardinal Glennon Childrens Hospital (@ St. Louis) | FM |
| 452.17500 | 457.17500 | WPLR946 | FF | | | Unknown Use (Removed from license) | FM |
| 461.72500 | | WPLR946 | F | 192.8 PL | | Sparta Base (Also Special School District - St. Louis) | FM |
| 155.34000 | | WPCH899 | M | | A-01 | Hospitals/Ambulance MERC1-1 | FM |
| 154.28000 | | | | | A-03 | Missouri Statewide Fire Mutual Aid | FM |
| 155.20000 | | | | | A-02 | Hospitals/Ambulance MERC1-1 | FM |
| 155.16000 | | | | | A-04 | Hospitals/Ambulance MERC1-1 | FM |
| 155.47500 | | | | | A-05 | Police - ISPERN | FM |
| 151.80500 | | | | | A-06 | Missouri Baptist Hospital | FM |
| 463.00000 | 468.00000 | | | | B-01 | MED1 | FM |
| 463.02500 | 468.02500 | | | | B-02 | MED2 | FM |
| 463.05000 | 468.05000 | | | | B-03 | MED3 | FM |
| 463.07500 | 468.07500 | | | | B-04 | MED4 | FM |
| 463.10000 | 468.10000 | | | | B-05 | MED5 | FM |
| 463.12500 | 468.12500 | | | | B-06 | MED6 | FM |
| 463.15000 | 468.15000 | | | | B-07 | MED7 | FM |
| 463.17500 | 468.17500 | | | | B-08 | MED8 | FM |
| 462.95000 | 467.95000 | WPCH899 | RM | | B-09 | Med9 | FM |
| 462.97500 | 467.97500 | | | | B-10 | MED10 | FM |
| 462.95000 | 467.95000 | WNJN974 | RM | 192.8 PL | B-13 | Lifebeat Dispatch (@ Cape Girardeau - SE MO Hospital) | FM |
| 464.72500 | 469.72500 | | | | B-14 | Children's Hospital - St. Louis - Security TONE31 | FM |
| 462.95000 | 467.95000 | WPCH899 | RM | 162.2 PL | B-15 | ARCH Dispatch @ Barnes Hospital - St. Louis | FM |
| 160.18500 | | WQAG35 | BM | | | Air Methods (@ St. Joseph Buchanan County Missouri) | FM |
| 453.01250 | 458.01250 | WPCH899 | M | | | Mobile Extenders | FM |
| 464.47500 | 469.47500 | WPFU313 | RM | | | SE MO Hospital @ Cape Girardeau | FM |

In your browser select EDIT _ COPY

Goto ARC83 and select EDIT _ PASTE SPECIAL:



Frequency data is now pasted in the grid, if more than 20 frequencies are found the software will ask to paste in other banks:



In the software setup you can change the behaviour of the 'Paste Special' option, see section 3.4.

2.6 Copy/Move/Swap Memory channels / Banks

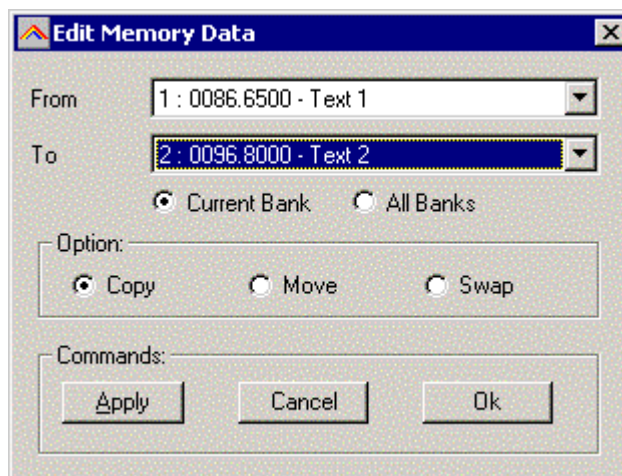
Copy/Move/Swap Memory Channels



Copy/Move/Swap Banks

Memory channels or entire memory banks can be easily copied, moved or swapped.

2.6.1 Copy/Move/Swap Memory Channels:

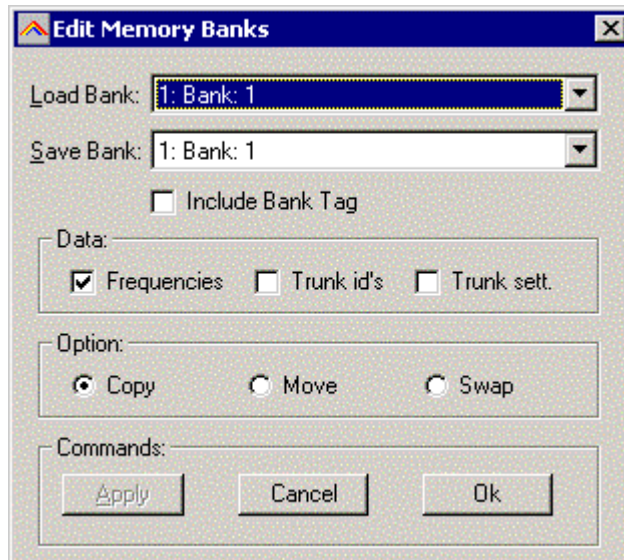


The 'from' and 'to' list boxes will automatically display the channel number, frequency and tag. Channels that are empty (no frequency programmed) are indicated as Empty.

Current Bank: copy/move/swap channels in the active bank

All Banks: copy/move/swap channels in all Banks

2.6.2 Copy/Move/Swap Memory Banks:



Use this window to copy/move/swap entire memory banks.

The 'Include Bank Tag' options will also copy/move/swap the bankname.

2.7 Fill Down / Fill Series

The Fill down and fill series options are used to copy the same data into a range of channels. Fill series will auto calculate ascending numbers in text tags (see examples below, screenshots were taken from other software, this is example only)

This example will show fill down:

Channel 10 contains Trunk=OFF, Delay Time = 4 seconds and Record =ON

| | Freq. (MHz) | Tag | Trunk | Delay Time | Record |
|----|-------------|-----|-------|------------|--------|
| 10 | 0400.0000 | | Off | 4 | On |
| 11 | 0400.0500 | | | | |
| 12 | 0400.1000 | | | | |
| 13 | 0400.1500 | | | | |
| 14 | 0400.2000 | | | | |
| 15 | 0400.2500 | | | | |
| 16 | 0400.3000 | | | | |
| 17 | 0400.3500 | | | | |
| 18 | 0400.4000 | | | | |
| 19 | 0400.4500 | | | | |
| 20 | 0400.5000 | | | | |

We want to copy this data to channels 11-20; first you must highlight the channel range:

| | Freq. (MHz) | Tag | Trunk | Delay Time | Record |
|----|-------------|-----|-------|------------|--------|
| 10 | 0400.0000 | | Off | 4 | On |
| 11 | 0400.0500 | | | | |
| 12 | 0400.1000 | | | | |
| 13 | 0400.1500 | | | | |
| 14 | 0400.2000 | | | | |
| 15 | 0400.2500 | | | | |
| 16 | 0400.3000 | | | | |
| 17 | 0400.3500 | | | | |
| 18 | 0400.4000 | | | | |
| 19 | 0400.4500 | | | | |
| 20 | 0400.5000 | | | | |

Now select the FILL DOWN option:

| | Freq. (MHz) | Tag | Trunk | Delay Time | Record |
|----|-------------|-----|-------|------------|--------|
| 10 | 0400.0000 | | Off | 4 | On |
| 11 | 0400.0500 | | Off | 4 | On |
| 12 | 0400.1000 | | Off | 4 | On |
| 13 | 0400.1500 | | Off | 4 | On |
| 14 | 0400.2000 | | Off | 4 | On |
| 15 | 0400.2500 | | Off | 4 | On |
| 16 | 0400.3000 | | Off | 4 | On |
| 17 | 0400.3500 | | Off | 4 | On |
| 18 | 0400.4000 | | Off | 4 | On |
| 19 | 0400.4500 | | Off | 4 | On |
| 20 | 0400.5000 | | Off | 4 | On |

The software will automatically fill the selected range, using the data at the top of the selected range.

Fill Series:

Fill series only works in the tag column. It will look for number information in the tag and auto increase the number in ascending channels.

Example: Channel 10 contains the tag 'UHF Channel 431':

| | Freq. (MHz) | Tag |
|----|-------------|-----------------|
| 10 | 0400.0000 | UHF channel 431 |
| 11 | 0400.0500 | |
| 12 | 0400.1000 | |
| 13 | 0400.1500 | |
| 14 | 0400.2000 | |
| 15 | 0400.2500 | |
| 16 | 0400.3000 | |
| 17 | 0400.3500 | |
| 18 | 0400.4000 | |
| 19 | 0400.4500 | |
| 20 | 0400.5000 | |

Highlight the channels where you want to copy the data to:

| | Freq. (MHz) | Tag |
|----|-------------|-----------------|
| 10 | 0400.0000 | UHF channel 431 |
| 11 | 0400.0500 | |
| 12 | 0400.1000 | |
| 13 | 0400.1500 | |
| 14 | 0400.2000 | |
| 15 | 0400.2500 | |
| 16 | 0400.3000 | |
| 17 | 0400.3500 | |
| 18 | 0400.4000 | |
| 19 | 0400.4500 | |
| 20 | 0400.5000 | |

Now select the FILL SERIES option and ARC83-LITE auto calculates the new tags:

| | Freq. (MHz) | Tag |
|----|-------------|-----------------|
| 10 | 0400.0000 | UHF channel 431 |
| 11 | 0400.0500 | UHF channel 432 |
| 12 | 0400.1000 | UHF channel 433 |
| 13 | 0400.1500 | UHF channel 434 |
| 14 | 0400.2000 | UHF channel 435 |
| 15 | 0400.2500 | UHF channel 436 |
| 16 | 0400.3000 | UHF channel 437 |
| 17 | 0400.3500 | UHF channel 438 |
| 18 | 0400.4000 | UHF channel 439 |
| 19 | 0400.4500 | UHF channel 440 |
| 20 | 0400.5000 | UHF channel 441 |

2.8 Other Options:

DUMMY BANK:

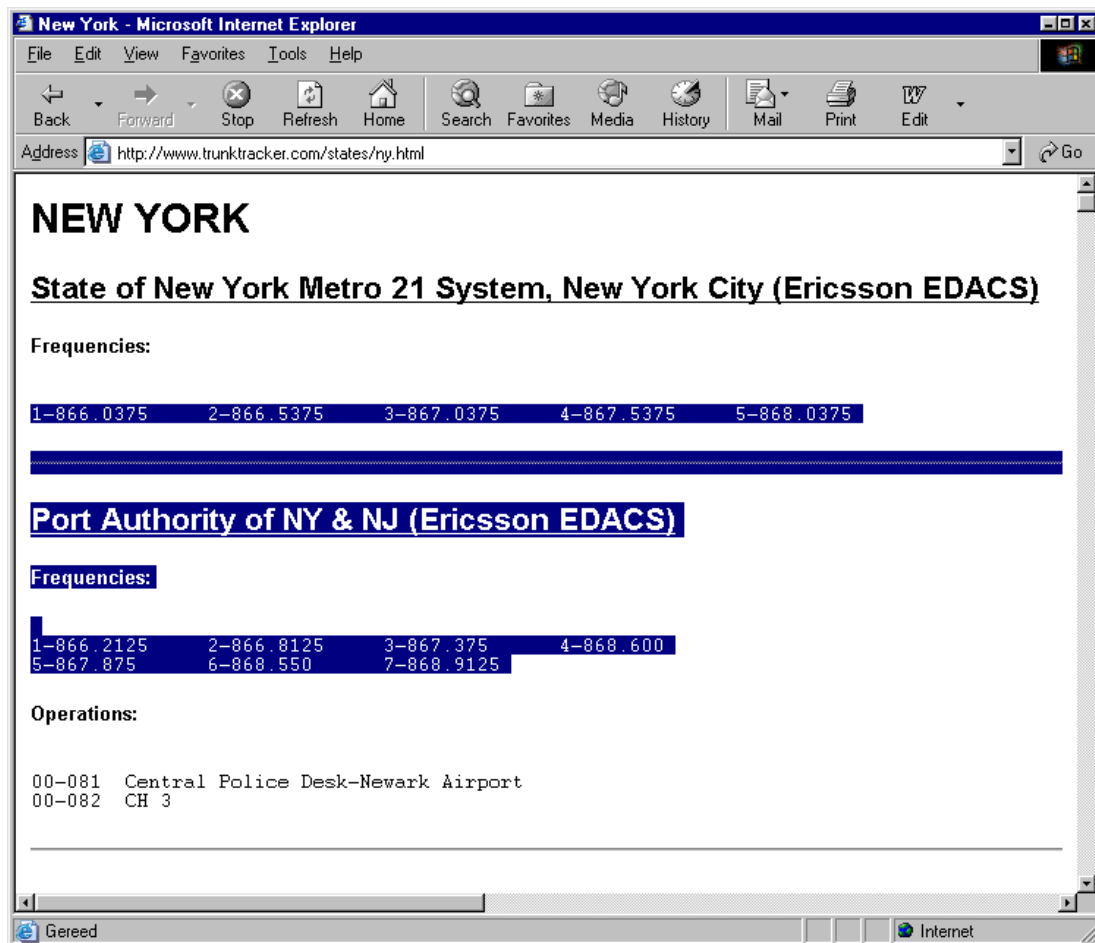
The dummy bank is a virtual bank. You can use this bank for temporary storage of data.

The data in the dummy bank is not send to your scanner nor stored in a file. You can also consider the dummy bank as a large clipboard. You can use the cut/copy/paste options to move data between the dummy and memory banks.

2.9 Using Webcatcher for importing frequencies from internet website:

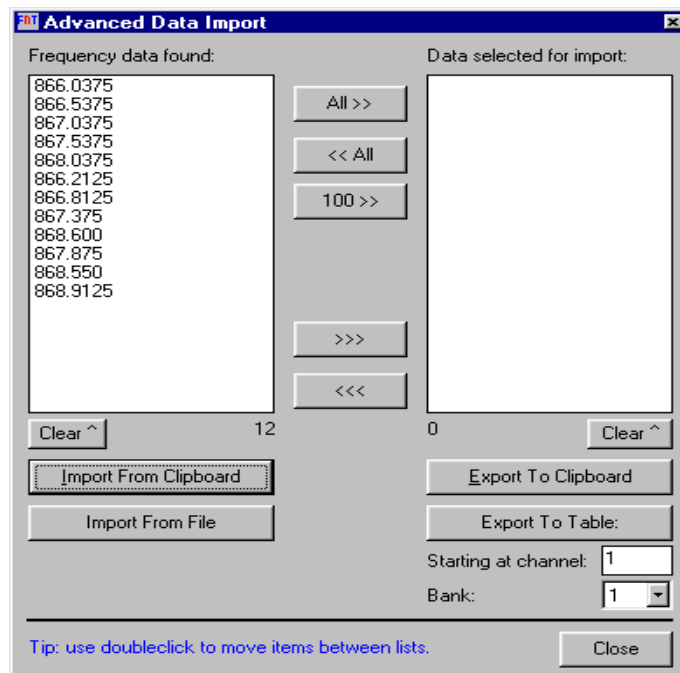
ARC83-LITE can very easily import frequencies from any website.

- Start the ARC83-LITE software
- Open you internet browser and open a web site displaying frequencies you want to import (example: <http://www.trunktracker.com>)
- In your browser highlight the area you want to import:

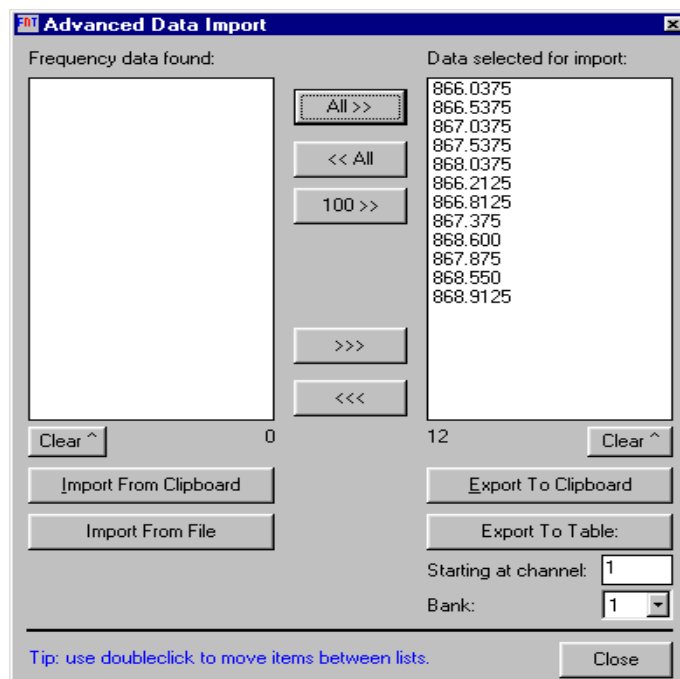


- Now you must press CTRL - C in your browser (or select EDIT _ COPY from the menu)
- Now go to ARC83-LITE and select FILE _ ADVANCED DATA IMPORT
- A new window is shown (see below)
- Now press the "IMPORT FROM CLIPBOARD" button.
- The software will now show the frequencies it found in the highlighted part of the web site.

- ARC automatically removes duplicate frequencies:



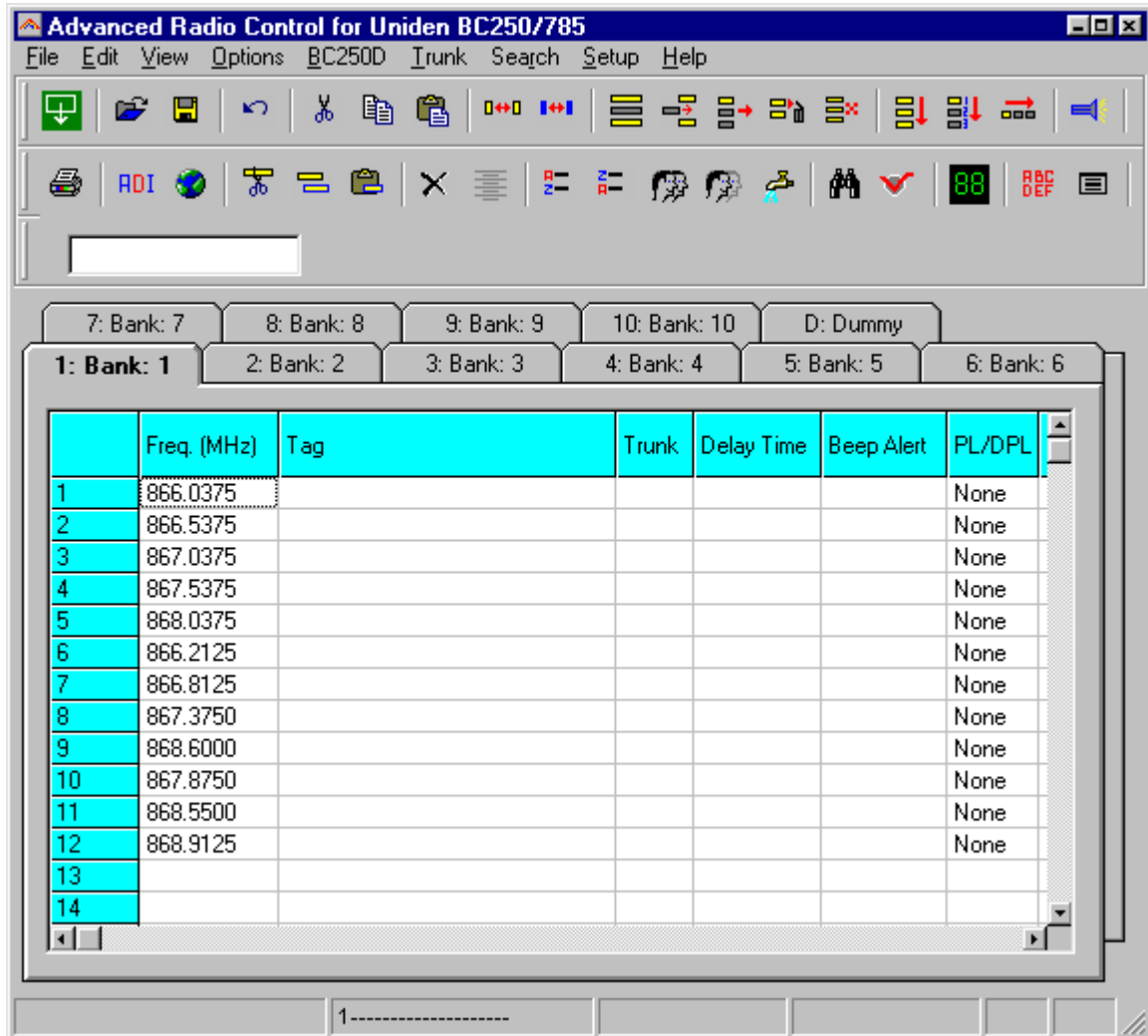
- For import into the memory table you must transfer the frequencies to the right list.
- Finally you select in what bank and at what channel you like to import the data.



- Press "EXPORT TO TABLE" button and frequencies are ready for upload!

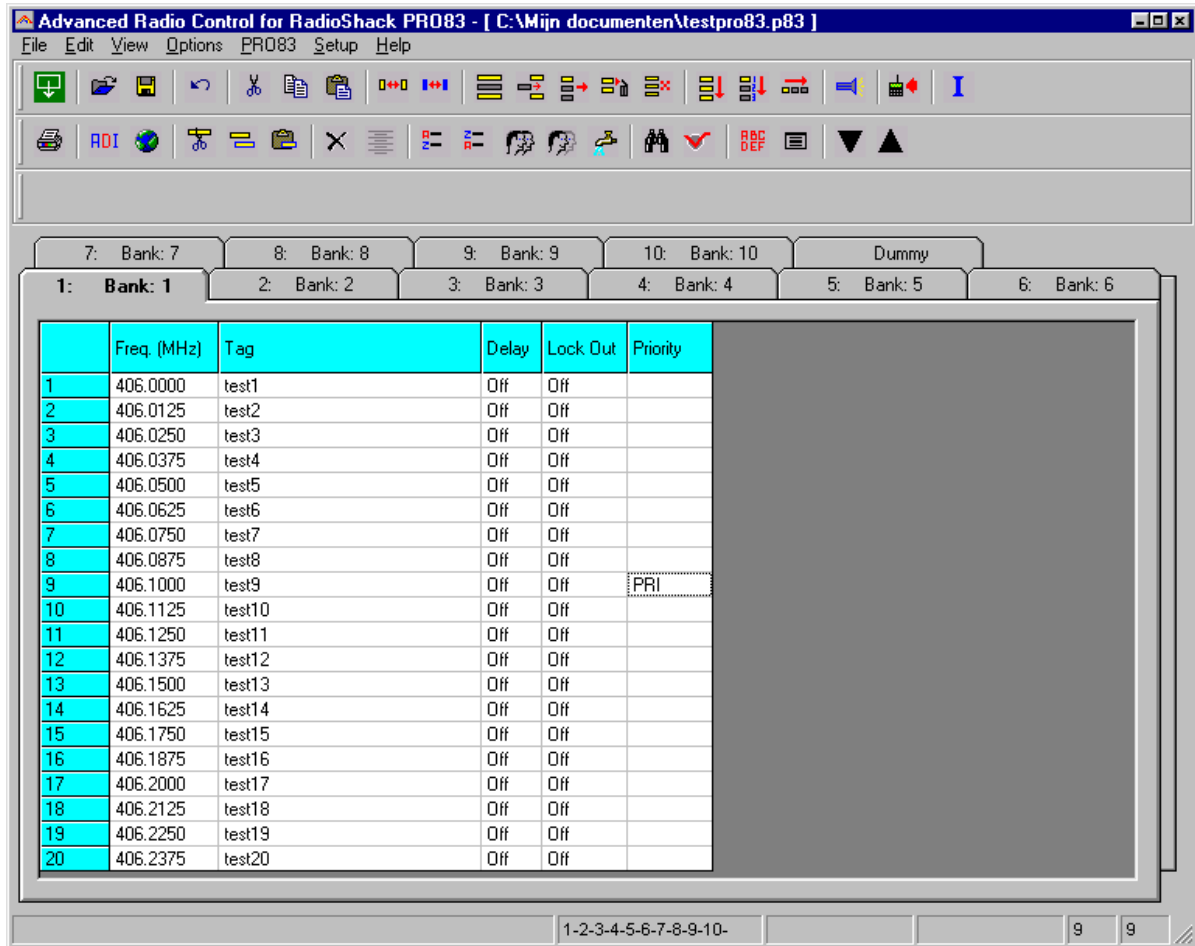
- Webcatcher works with ANY website, the website shown above is only an example.

Here is the result of WebCatcher:



2.10 Priority Channels:

You can set the priority channels, every banks stores 1 priority channel. To set priority, simply double click the PRIORiTY cell of the channel you want to set as priority channel:



If more than one channel in a bank has the Priority flag set, the lowest channel number will be selected as priority channel.

2.11: Uploading data into the scanner:

From the main menu select: PRO83 _ Send Data from Scanner.

Tip: you can also use the toolbar button or press F6.

A new window is shown:



You can upload all channels, a single bank or all search ranges.

2.12 Import/Export data:

ARC83-LITE can import data from various sources:

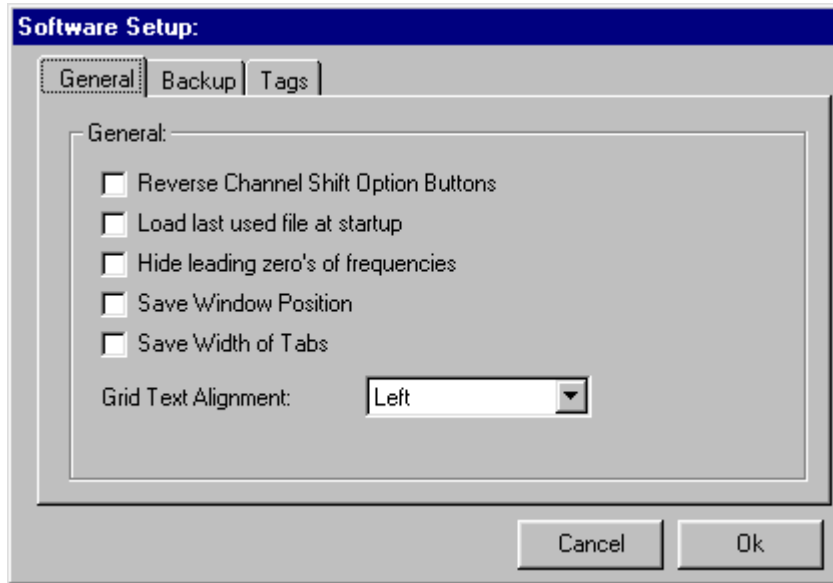
- import using the clipboard: you can easily copy/paste data from Excel or other database software that supports the clipboard
- import frequencies from text/html/csv files. Use the webcatcher option to import from these files.

ARC83-LITE can export data:

- CSV format: Select FILE _ Export CSV data , then select the data you want to export and ARC83-LITE will create a CSV file
- ARC83-LITE fully supports the clipboard so you can copy/paste data from ARC83-LITE into many other applications.

3 Software Settings

3.1 General:



Reverse Channel Shift Option Buttons: In the memory editor grid two toolbar buttons are used to shift channels up/down. You can reverse the direction of these buttons.

Load last used file: Automatically loads the last mem file during startup of the software.

Hide leading zero's: Hide leading zero's in the memory editor grid.

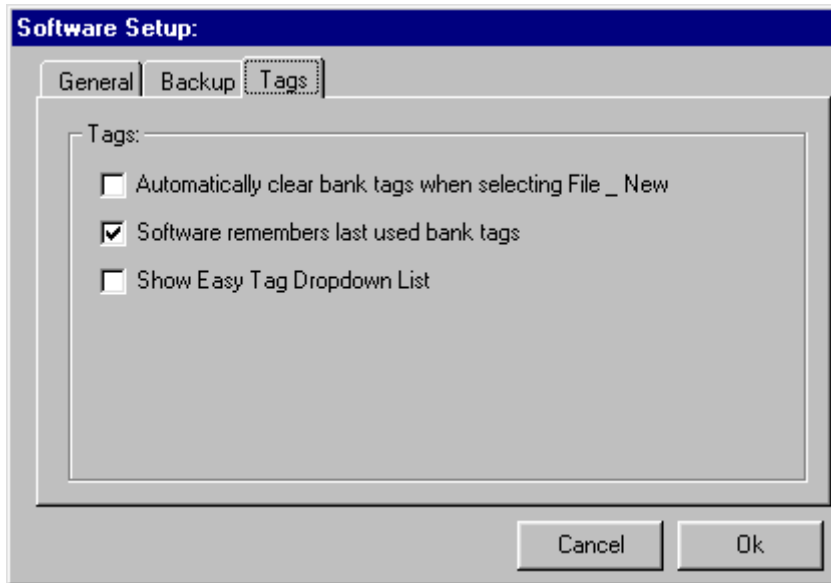
Save Window position: stores the size and position of the main editor screen.

Save width of tabs: You can change the width of the columns in the main editor grid. This option remembers the width of the columns.

Grid text alignment: sets the alignment of text in the main editor grid (left, right, center).

Note: this option only sets alignment in the editor grid. For centering memory channel tags there is a separate option.

3.2 Software settings: Tags



Save memory banks tags: stores the tags of memory banks in mem files.

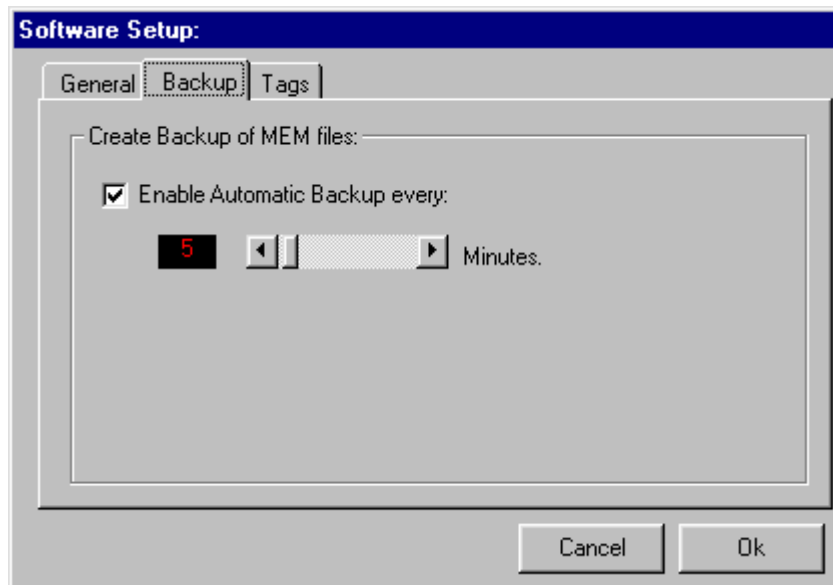
Automatically clear bank tags: selecting FILE NEW clears the bank tags. If this option is not selected, ARC83-LITE will show the most recent bank tags stored in your scanner.

Software remembers last used bank tags: If this option is selected the software will store and remember the latest memory bank tags.

Read/Send memory bank tags: this option defines whether you want to synchronize the tags while reading/sending data to/from scanner.

Show Easy Tag dropdown menu: N/A for ARC83

3.3 Software settings: Backup



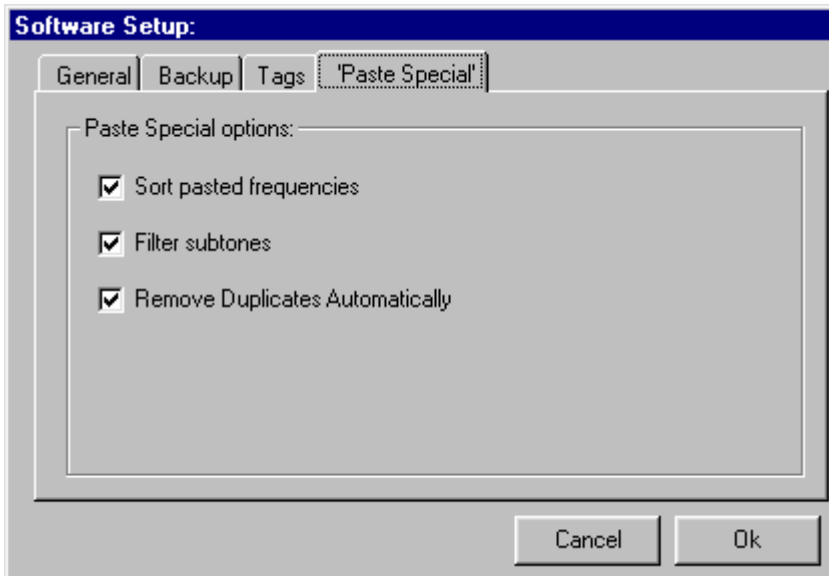
ARC83-LITE can generate automatic backups of your work. Backups are stored in C:\PROGRAM FILES\BUTEL\ARC83\BACKUP.

The backup file contains time and date so you can easily find backup files. The backup process does not work while Virtual Control is active and during data read/send operation.

You can set the interval in minutes.

IMPORTANT: ARC83-LITE does not delete any backup files, you must check the contents of the BACKUP directory at regular intervals and remove old backup data.

3.4 Paste Special



The 'paste special' option will paste frequencies directly from a website, very similar to the WebCatcher option.

If more than 20 frequencies are 'pasted' the software will ask you confirmation to paste the remaining data in other banks.

The maximum number of frequencies that can be pasted is 200, since the scanner can only store 200 frequencies.

Paste Special will automatically filter frequencies from the clipboard. For your convenience you can change the behaviour of Paste Special:

- Sort pasted frequencies: the frequency list that is pasted is sorted by frequency automatically
- Filter Subtones: some website also show subtone data. To avoid subtones being imported as frequencies, check this option
- Remove Duplicates: some website may show one frequency more than one time in the highlighted area, use this option to avoid duplicate frequencies being pasted in the memory table.

4 General information and troubleshooting

4.1 INI file settings:

The setup.ini file contains some additional options you can set. You can open and edit setup.ini with notepad. Do NOT change any other parameters than the parameters shown in this section!

expert=0 : software will ask confirmation before uploading/deleting data
expert=1 : software will not ask conformation

option4=0 : enable software exit message
option4=1 : disable software exit message

All other parameters in setup.ini should not be changed!

If you want to restore the default setup.ini, delete the setup.ini file and start the software, this will create a new setup.ini file.

4.2 Troubleshooting communication problems

In case of communication problems you can use the information in this section to troubleshoot communication problems.

4.2.1 Check your cable

Most problems are traced back to serial cable problems. Always connect the supplied PC interface directly to a free serial port.

4.2.2 Other serial drivers:

If you also use the serial port for programming your PDA/PAL/POCKET PC or mobile phone (GSM), there may be resident software that constantly polls the serial ports. Disable any PDA/mobile phone programming software; they may interfere with the scanner serial communication.

4.2.3 Serial/USB devices:

ARC83-LITE does not support USB/serial devices. Use a serial port connection using a PCMCIA or PCI option card. For USB support contact the supplier of the converter, BuTel does not provide any support for USB devices.

4.2.4 Comm error 8018:

Communication error number 8018 will occur when other software is already controlling the selected comport. This error means that ARC83-LITE can not get access to the selected comport usually because other software has control over the comport. Close the other software.

4.3 Support:

The latest versions of ARC83-LITE are available for download at www.butelsoftware.com

In case of problems contact BuTel customer support at support@butel.nl , support is only available by e-mail, BuTel does not provide telephone support.

4.4 Revision history:

ARC83-LITE V0.80:

- first prerelease December 2005.

ARC83- V 1.02

- new 'paste special' option

Company Contact Details:

BuTel - Software & Consultancy
PO box 101
4920 AC Made
The Netherlands

T (+31) 162 684 476
F (+31) 162 680 581
I <http://www.butelsoftware.com>
E info@butel.nl

US Distribution and US Dealer Information:

Scanner Master Corp.
40 Freeman Place
Needham, MA 02492
USA

T (+1) 781 292 1010 / 1-800-SCANNER
F (+1) 781 292 1020
I <http://www.scannermaster.com>
E sales@scannermaster.com

Dealers List:

For an up to date dealers list visit: <http://www.butelsoftware.com>

USA:

AES- www.advancedspecialties.net (NJ)
Computer International - www.computer-int.com (FL)
Ham Radio Outlet: www.hamradio.com
Ham Radio Outlet Anaheim, (CA)
Ham Radio Outlet Atlanta, (GA)
Ham Radio Outlet Burbank, (CA)
Ham Radio Outlet Denver, (CO)
Ham Radio Outlet Newcastle, (DE)
Ham Radio Outlet Oakland, (CA)
Ham Radio Outlet Phoenix, (AZ)
Ham Radio Outlet Portland, (OR)
Ham Radio Outlet San Diego, (CA)
Ham Radio Outlet Salem, (NH)
Ham Radio Outlet Sunnyvale, (CA)
Ham Radio Outlet Woodbridge, (VA)
Lentini Communication: www.lentinicomm.com (CT)
Scanner Master: www.scannermaster.com (MA)
Scanner World: www.scannerworld.com (NY)
Universal Radio: www.universal-radio.com (OH)

The Netherlands:

ARS-Elopta - www.ars-elopta.nl
Avera - www.avera.nl
Cbshop - www.cbshop.nl
Dile - www.dile.nl
Dolstra - www.dolstra.nl
JBE - www.jbe.nl
Radio ABE - www.radio-abe.nl
Samlex - www.samlex.nl
Scanman - www.scanman.nl

Denmark:

Betafon Aps. - www.betafon.dk

Germany:

Thiecom - www.thiecom.de

Poland:

Pro-Fit - www.pro-fit.pl

Please note that some dealers only sell selected items from this catalog. For price and availability information contact your local dealer.